

MONTHLY MEMBERSHIP PROGRESS REPORT

District 2 S5

Results as of: 2/29/2020

GMT:

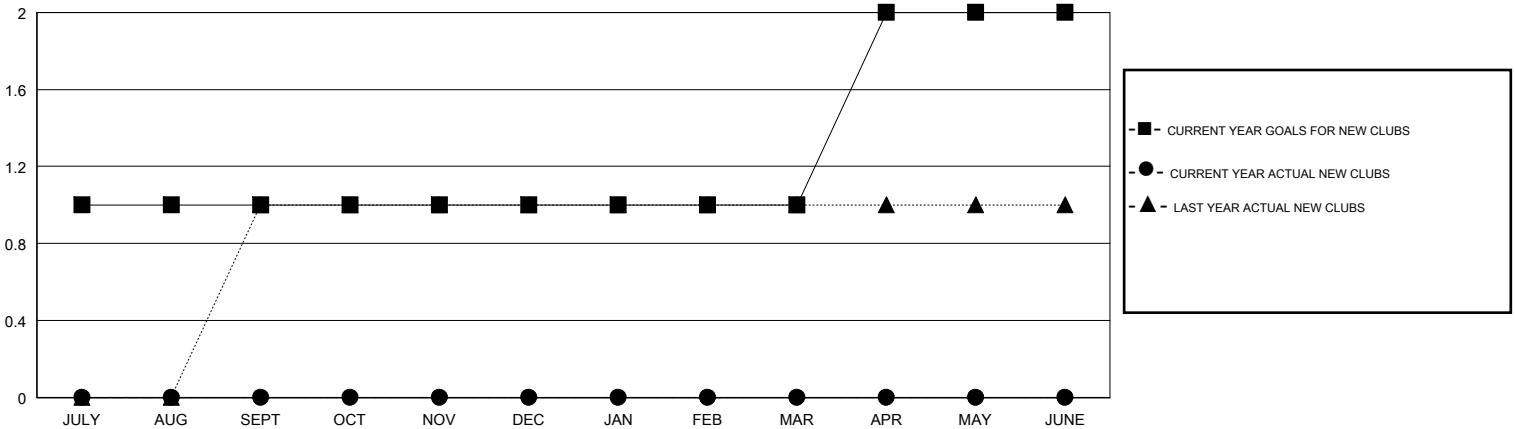
LOCATION TEXAS

GMT CA

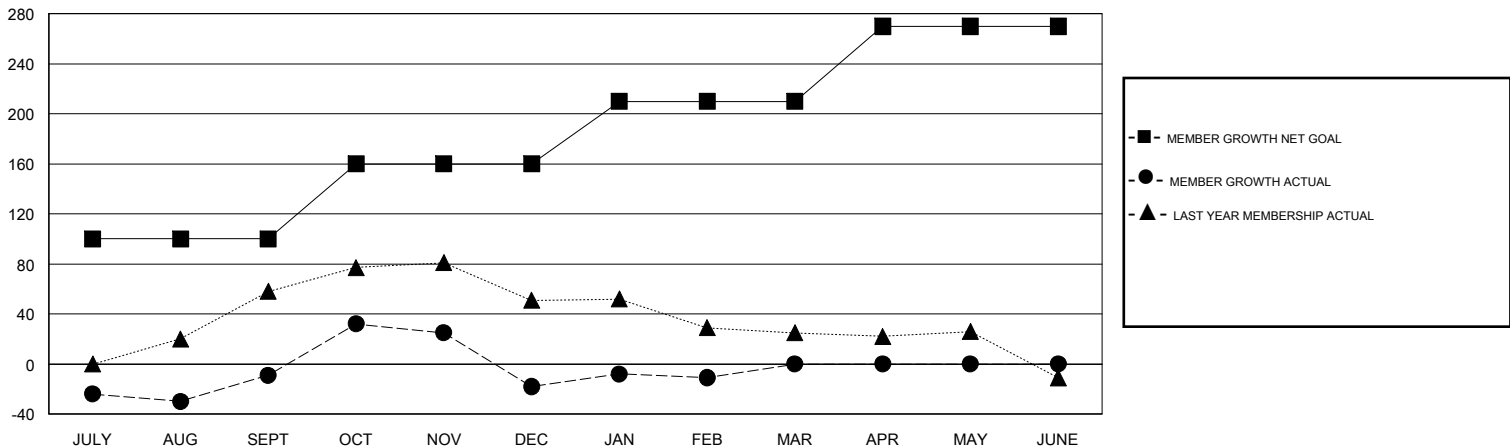
Clubs			
RESULTS FOR 2019-2020			
QUARTER	NEW CLUB GOAL	NEW CLUBS	DROPPED CLUBS
JULY/AUG/SEPT	1	0	0
OCT/NOV/DEC	0	0	0
JAN/FEB/MAR	0	0	0
APR/MAY/JUNE	1	0	0

Members			
RESULTS FOR 2019-2020			
QUARTER	MEMBER GROWTH NET GOAL	MEMBER GROWTH ACTUAL	DROPPED MEMBERS ACTUAL (including transfers)
JULY/AUG/SEPT	100	75	77
OCT/NOV/DEC	60	87	89
JAN/FEB/MAR	50	47	31
APR/MAY/JUNE	60	0	0

GOALS AND ACTUAL NEW CLUBS CUMULATIVE



GOALS AND ACTUAL MEMBERS CUMULATIVE



DROPPED CLUBS: 0	
DROPPED MEMBERS	
DECEASED	20
CLUB CANCELLED	0
OTHER	177
TOTAL	197

41 CLUBS OF 61 ADDED 1 OR MORE NEW MEMBERS

[CLICK HERE FOR CUMULATIVE MEMBERSHIP DATA](#)

<u>GENDER DISTRIBUTION</u>	
MALE	1,506 (61.44%)
FEMALE	945 (38.56%)
TOTAL FAMILY UNIT MEMBERS	419
FAMILY MEMBERS PAYING HALF DUES	212